

A POLLY HAD A DOLLY PATTERN

Nappy

a free gift for you



BABY DOLL CLOTHES

FOR 12" AND 16" DOLLS



Tips and tricks

Working with jersey fabrics isn't difficult but there are a few things that you need to be aware of to get the best results.

SETTING UP YOUR SEWING MACHINE

- Make sure you have changed your sewing needle to a ballpoint or jersey needle - I like the size 80/12 best.
- Reduce the pressure on your foot - you need about half the pressure that you need for woven fabrics - but please refer to your sewing machine's manual.
- Take care that you don't stretch the fabric as you sew, as this will distort the seams.

WORKING WITH VELOUR

Velour fabric has 'nap' which means you have to pay extra attention to how you cut your pieces out.

'Nap' refers to a process where the fibres of fabric are teased and raised and/or sheared off to make them even. Examples included corduroy, velvet and velour. The raised fibres of napped fabric all lie in one direction, making the fabric look and feel different when seen or touched from different angles.

When cutting out the pieces it's very important to lay out pattern pieces so the nap runs in the same direction on each garment piece or you'll end up with odd shading.

You can tell the direction of the fibres by running your hand up and down the fabric, one way will be smooth and one way will be textured. It doesn't matter which orientation you choose, as long as you are consistent.

Sewing terms

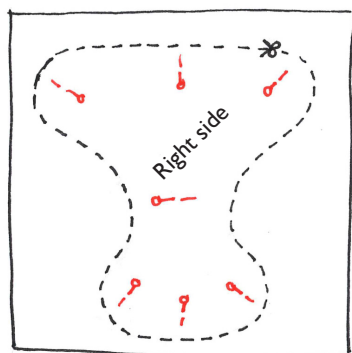
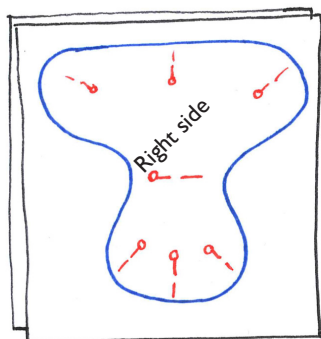
PLACE WRONG SIDES TOGETHER	Put the wrong sides of the fabric against each other with the right sides facing out.
----------------------------	---

OVERLOCKER STITCH	This is a kind of stitch that sews over the edge of one or two pieces of cloth for edging, hemming, or seaming. Usually an overlock sewing machine will cut the edges of the cloth as they are fed through (they are called sergers in North America). You can find a similar stitch on most sewing machines, or a triple zig-zag will work.
-------------------	--

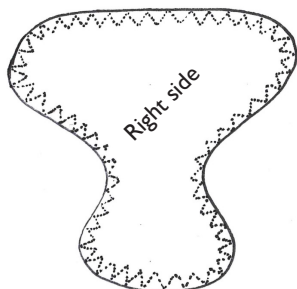
ZIG-ZAG STITCH	A zigzag stitch is stitch that zigzags. A triple zig-zag stitch is formed of three small stitches and stronger.
----------------	---

Nappy

FOR 12" AND 16" DOLLS



2.



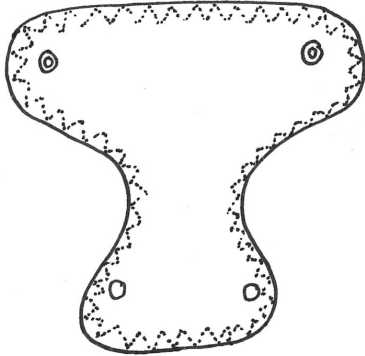
For 12" doll cut 9" wide by 8.5" high square in velour and the same in jersey.

For 16" doll cut x" wide by x" high square in velour and the same in jersey.

Place the two squares **wrong** sides together. Draw around the template with a water erasable marking pen.

Cut out, ensuring the two layers stay pinned together.

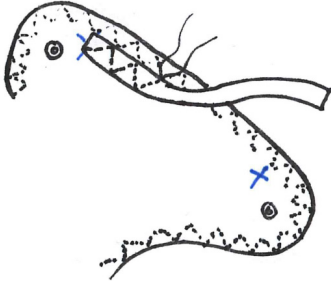
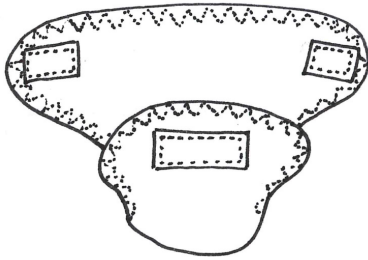
Using an overlocker or the zig-zag stitch on your sewing machine sew the two layers together all the way round.



4.

Apply poppers or velcro to fasten nappy to doll using the markers on the pattern as a guide.

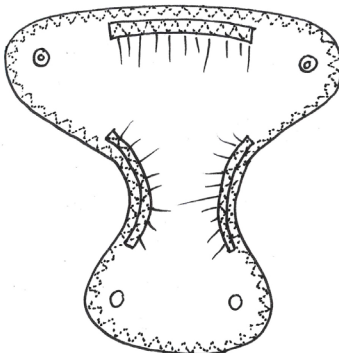
Velcro is easier for little hands to manage.



5.

Taking the 6mm wide white elastic, stitch it on using a zig-zag stitch.

Make sure that you stretch the elastic as you sew to gather the fabric.



Suggested suppliers

UK

Little Oke Dolls - specialist doll making supplies

www.waldorfdolls.co.uk

01626 369535

littleokedolls@waldorfdolls.co.uk

Myriad - natural toys and craft

www.myriadonline.co.uk

01725 517085

customerservice@myriadonline.co.uk

Plush Addict

www.plushaddict.co.uk

0800 048 8787 / 01733 808950

sales@plushaddict.co.uk

USA

A Child's Dream

www.achildsdreams.com

(800) 359-2906

info@achildsdream.com

Weir Crafts

www.weircrafts.com

1-419-366-1302

info@weircrafts.com

EUROPE

Meaningful crafts

www.meaningfulcrafts.com

+31 - (0)222 - 31 36 44

hi@meaningfulcrafts.com

Examples



GET IN TOUCH AND SHARE YOUR MAKING!

Polly had a Dolly
www.pollyhadadolly.co.uk

© 2021 Lydia Stonely



